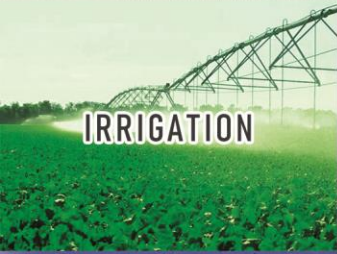
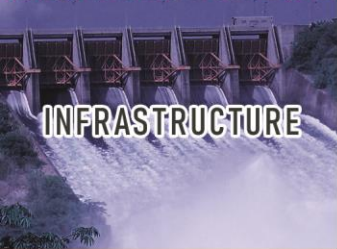




WATER SUPPLY



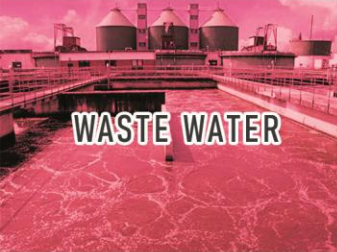
IRRIGATION



INFRASTRUCTURE



INDUSTRY



WASTE WATER

PRODUCT

Electric mixed flow borehole pumps coupled with asynchronous borehole motors at 2.900 and 1.450 rpm. Tried and tested machines whose ideal use is for lifting medium flows and medium heads. These pumps are installed in wells all over the world with unanimous satisfaction of the users.

Sturdy construction of cast iron, bronze or stainless steel with impellers locked on the stainless steel shaft. Their design makes them especially suited for lifting water containing sand.



E10S-E12S-E14S
E16S-E18S

TECHNOLOGY

DEFENDER®

DEFENDER®, a smart device designed, tested and patented by Caprari to protect the electric pumps from electrochemical corrosion and galvanic currents, passivating the stainless steel so as to create a further safety barrier.



Casting technologies NEXT GENERATION

smooth and seamless surface, that allows for water to flow smoothly with less losses and higher efficiency. Produced with the latest technology and going through careful tests, the casting technology yields more precision, accuracy and durability.



EASY-CHECK®

EASY-CHECK pump assembly system The assembly between the valve casing and the outer shell is achieved by means of an innovative threading system, namely EASY-CHECK, whose special profile and sand seal guarantee long-life and most importantly,



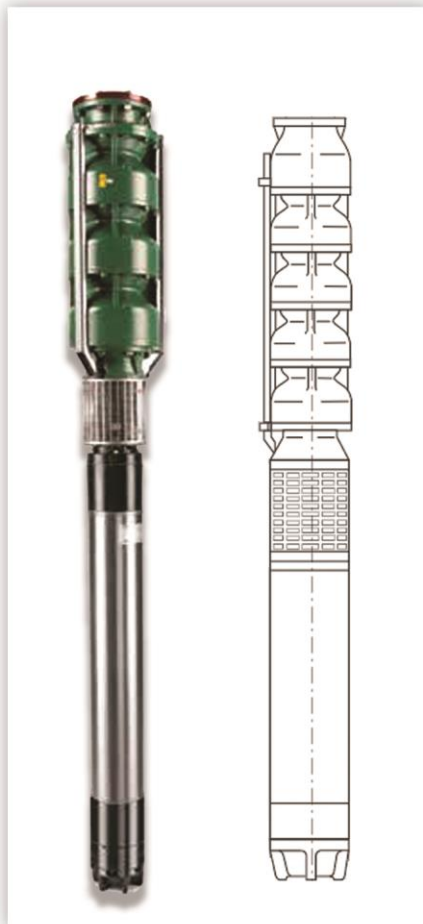
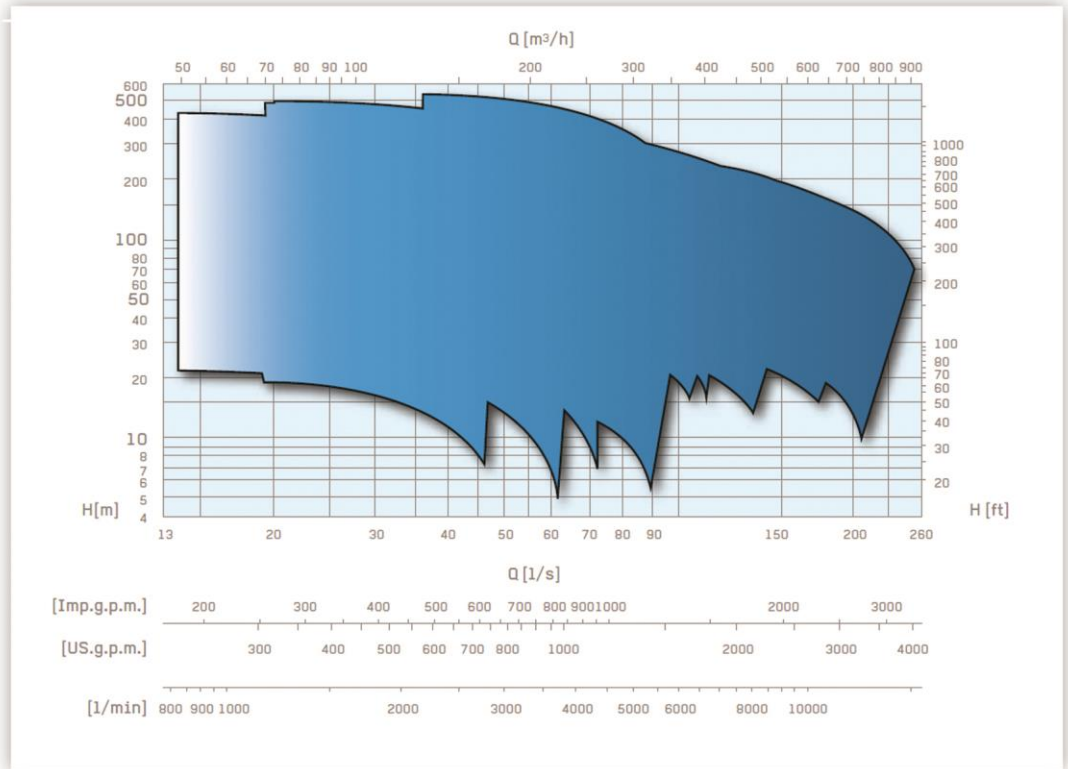
NEXT GENERATION

Caprari's innovative pump system technology leads to best in Class efficiencies and Benchmark performance, tested using international standards, and produced for the best quality products.



technical specifications

Capacity up to	l/s	250
Head up to	m	600
Power up to	kW	370



E10S-E12S-E14S E16S-E18S Series

- Sturdy construction of cast iron, bronze or stainless steel with impellers locked on the stainless steel shaft.
- Versatility of installation: flange coupling and threaded coupling.
- The special PROTECTOR® device installed in Nema couplings between the wet-end and motor perfectly seals the coupling zone and protects it and the seal in the motor from sand.
- Product modularity
Strong standardization of components.
- great reliability, energy savings play a fundamental role ensured by the excellent hydraulic efficiencies that characterize these electric pumps.
- Casting technologies NEXT GENERATION: smooth and seamless surface.
- extremely resistant to wear and easy to remove in case of maintenance.
- NEXT GENERATION:
Best in Class efficiencies and Benchmark performance

