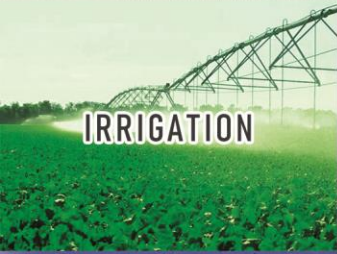
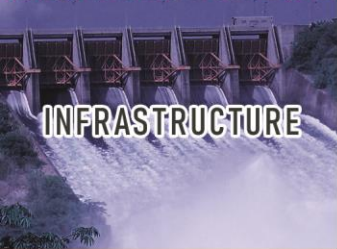




WATER SUPPLY



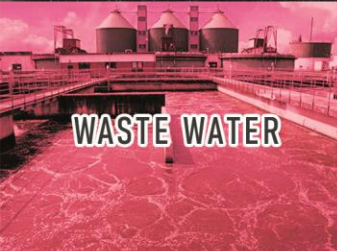
IRRIGATION



INFRASTRUCTURE



INDUSTRY



WASTE WATER

PRODUCT



High-efficiency multistage submersible electric pumps available in a wide range so as to perfectly suit whatever duty point may be required. Compact and stainless, they combine power and reliability owing to their pioneering type of construction (three exclusive patents) and the quality of the materials used to make them. They are designed to withstand galvanic corrosion thanks to the DEFENDER® passivating system. The EASY-CHECK disassembly system allows them to be easily serviced. Machines conform to 2009/125/EC Directive (EcoDesign - ErP).



E4XP-E4XED

TECHNOLOGY

DEFENDER®

DEFENDER®, a smart device designed, tested and patented by Caprari to protect the electric pumps from electrochemical corrosion and galvanic currents, passivating the stainless steel so as to create a further safety barrier.



EASY-CHECK®

EASY-CHECK pump assembly system. The assembly between the valve casing and the outer shell is achieved by means of an innovative threading system, namely EASY-CHECK, whose special profile and sand seal guarantee long-life and most importantly, prevent the valve casing from jamming. This makes it easier to disassemble and easier to inspect and maintain.



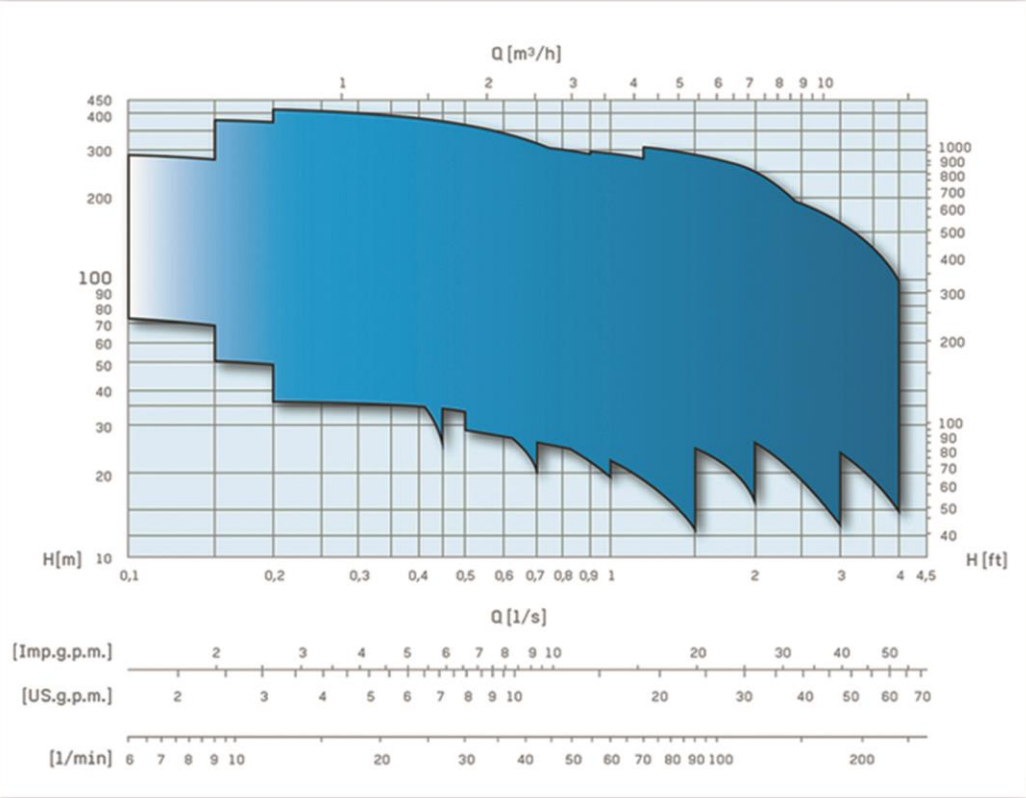
SAND PROTECTOR®

Moreover, the special PROTECTOR® device installed in Nema couplings between the wet-end and motor perfectly seals the coupling zone and protects it and the seal in the motor from sand.



technical specifications

Capacity up to	l/s	4,5
Head up to	m	425
Power up to	kW	7,5



E4 Series

- Use of stainless steel castings guarantees unflinching performance even in the most heavyduty applications
- Q/H and efficiency values at the very top of the sector 7 different sizes to cover all applications
- High-efficiency check valve to reduce head losses
- High output and mechanical resistance radial impellers
- Pump shaft highly resistant to mechanical wear and corrosion
- Easily accessible stainless steel transmission coupling
- Protected external cable on all models
- Maximum overall diameter 98 mm
- Easily disassembled, assembled, inspected and maintained
- Highly reliable
- Asynchronous submersible motor of the "inverter resistant"
- Ceramic bushing

